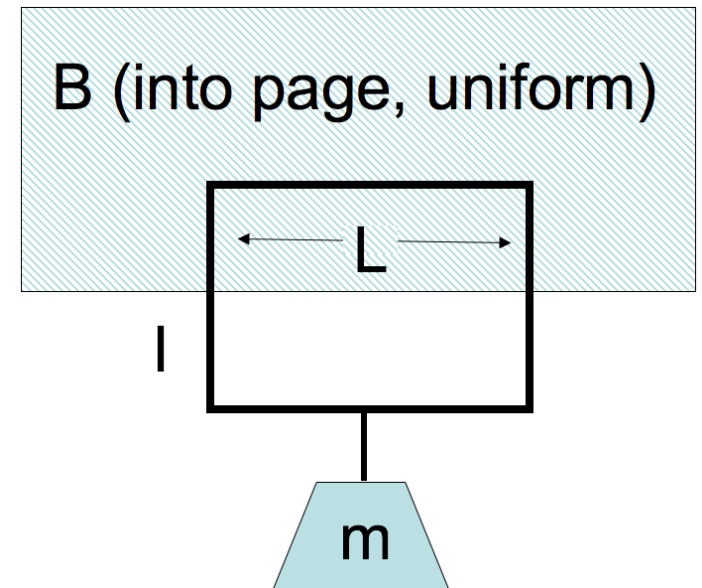


A wire loop in a B field has a current I . The B-field is localized, it's only in the hatched region, roughly zero elsewhere. Which way is I flowing to hold the mass in place?

- A. Clockwise
- B. Counter-clockwise
- C. You cannot "levitate" like this!



I feel that Exam 2 was a fair assessment.

A. Strongly Agree

B. Agree

C. Neither Agree/Disagree

D. Disagree

E. Strongly Disagree

I feel that Exam 2 was aligned with what we have been doing
(in class and on homework).

- A. Strongly Agree
- B. Agree
- C. Neither Agree/Disagree
- D. Disagree
- E. Strongly Disagree

I felt better prepared for Exam 2 than Exam 1.

A. Strongly Agree

B. Agree

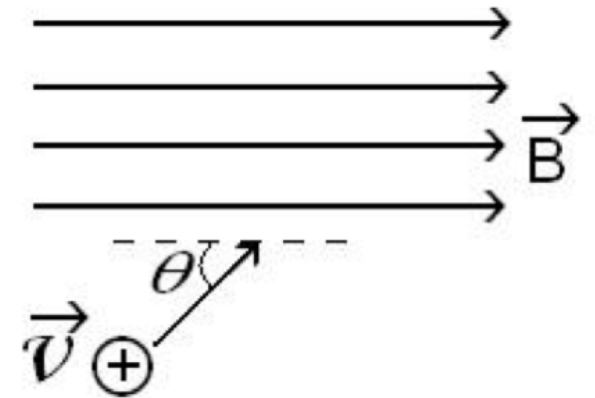
C. Neither Agree/Disagree

D. Disagree

E. Strongly Disagree

A proton (speed v) enters a region of uniform \mathbf{B} . v makes an angle θ with \mathbf{B} .

What is the subsequent path of the proton?



- A. Helical
- B. Straight line
- C. Circular motion, \perp to page. (plane of circle is \perp to \mathbf{B})
- D. Circular motion, \perp to page. (plane of circle at angle θ w.r.t. \mathbf{B})
- E. Impossible. \mathbf{v} should always be \perp to \mathbf{B}

In the first stage of the mass spectrometer, with $\mathbf{E} = E_0\hat{z}$ (pointing upward) and $\mathbf{B} = B_0\hat{x}$ (pointing out of the page), which particles travel through in a straight line?

- A. All particles regardless of speed
- B. Particles with speed B_0/E_0
- C. Particles with speed E_0/B_0
- D. Can't tell without knowing q and/or m

You may assume all particles move exclusively in the +y direction.

If we place a physical filter (i.e., a piece of metal with a thin slot that is a bit larger than the beam width to avoid diffraction) at the end of the first stage, which particles (assume they are all positively charged) hit the upper-part of the filter? Which hit the lower part?

- A. Fast moving particles hit the upper part; slow ones hit the lower part
- B. Slow moving particles hit the upper part; fast ones hit the lower part
- C. It's not possible to tell without q and/or m

Can we use the same mass spectrometer set up for negatively and positively charged particles? That is, will our set up distinguish between particles of a given mass and differently-signed charges?

A. Yes

B. No

For our velocity selector where $\mathbf{E} = E_0\hat{z}$ and $\mathbf{B} = B_0\hat{x}$ and we start particles from rest, we end up with the following **coupled** equations of motion,

$$\begin{aligned}m\dot{v}_y &= qv_zB_0 \\m\dot{v}_z &= qE_0 - qv_yB_0\end{aligned}$$

How might we solve them for $y(t)$ and $z(t)$?

- A. Just integrate the equations of motion
- B. Guess the general solution
- C. Take the time derivative of one and plug into the other
- D. Give up???