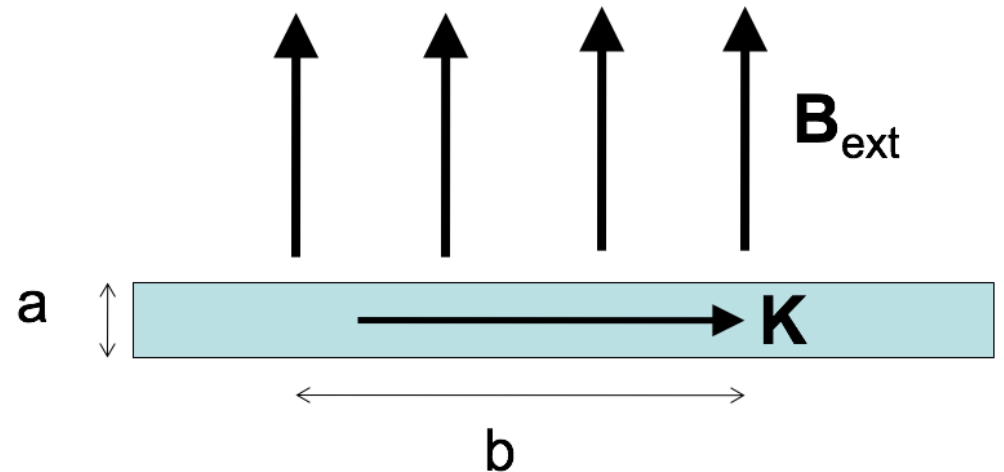


A "ribbon" (width a) with uniform surface current density K passes through a uniform magnetic field \mathbf{B}_{ext} . Only the length b along the ribbon is in the field. What is the magnitude of the force on the ribbon?

- A. KB
- B. aKB
- C. $abKB$
- D. bKB/a
- E. $KB/(ab)$



ANOUNCEMENTS

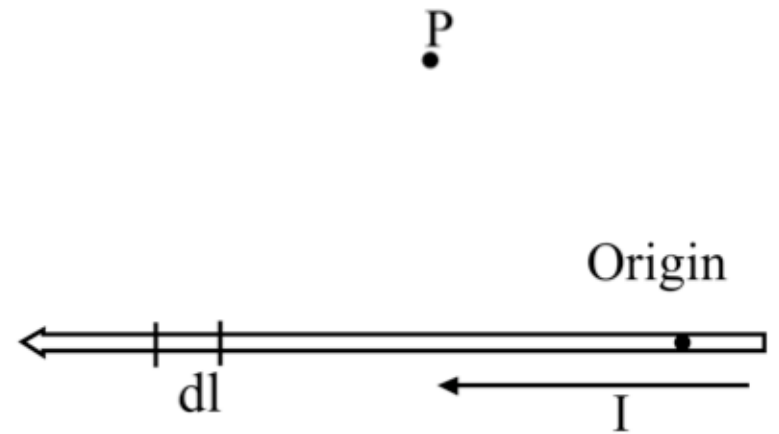
- No exam grades yet...sorry :(
 - By Friday...promise.
- Homework 12 is due AFTER Thanksgiving break
 - No homework due Wed. before Thanksgiving
 - But, Homework 12 is about 1.5 times longer...

To find the magnetic field \mathbf{B} at P due to a current-carrying wire we use the Biot-Savart law,

$$\mathbf{B}(\mathbf{r}) = \frac{\mu_0}{4\pi} I \int \frac{d\mathbf{l} \times \hat{\mathbf{R}}}{\mathcal{R}^2}$$

What is the direction of the infinitesimal contribution $\mathbf{B}(P)$ created by current in $d\mathbf{l}$?

- A. Up the page
- B. Directly away from $d\mathbf{l}$ (in the plane of the page)
- C. Into the page
- D. Out of the page
- E. Some other direction



What is the magnitude of $\frac{d\mathbf{l} \times \hat{\mathcal{R}}}{\mathcal{R}^2}$?

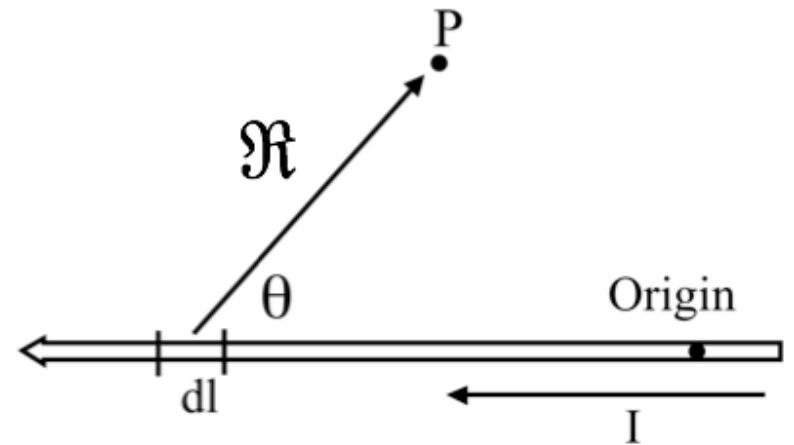
A. $\frac{dl \sin \theta}{\mathcal{R}^2}$

B. $\frac{dl \sin \theta}{\mathcal{R}^3}$

C. $\frac{dl \cos \theta}{\mathcal{R}^2}$

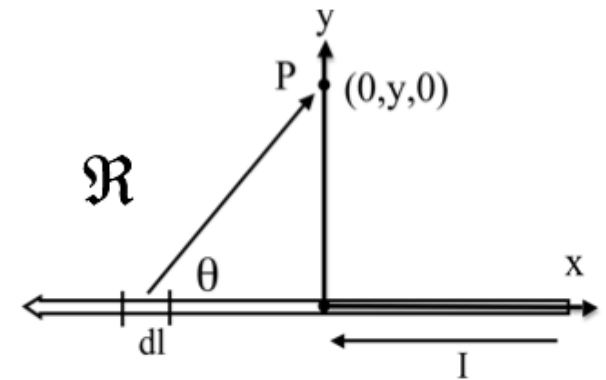
D. $\frac{dl \cos \theta}{\mathcal{R}^3}$

E. something else!

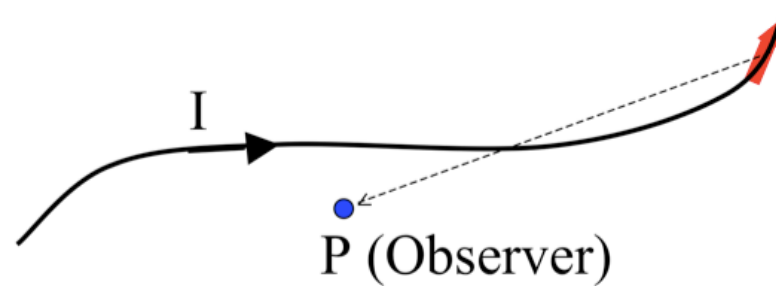


What is the value of $I \frac{d\mathbf{l} \times \hat{\mathcal{R}}}{\mathcal{R}^2}$?

- A. $\frac{I y dx'}{[(x')^2 + y^2]^{3/2}} \hat{z}$
- B. $\frac{I x' dx'}{[(x')^2 + y^2]^{3/2}} \hat{y}$
- C. $\frac{-I x' dx'}{[(x')^2 + y^2]^{3/2}} \hat{y}$
- D. $\frac{-I y dx'}{[(x')^2 + y^2]^{3/2}} \hat{z}$
- E. Other!



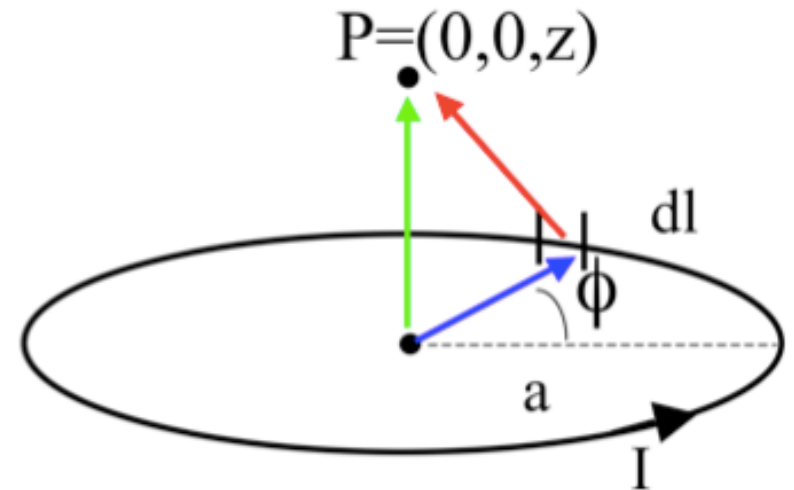
What do you expect for direction of $\mathbf{B}(P)$? How about direction of $d\mathbf{B}(P)$ generated JUST by the segment of current $d\mathbf{I}$ in red?



- A. $\mathbf{B}(P)$ in plane of page, ditto for $d\mathbf{B}(P, \text{ by red})$
- B. $\mathbf{B}(P)$ into page, $d\mathbf{B}(P, \text{ by red})$ into page
- C. $\mathbf{B}(P)$ into page, $d\mathbf{B}(P, \text{ by red})$ out of page
- D. $\mathbf{B}(P)$ complicated, ditto for $d\mathbf{B}(P, \text{ by red})$
- E. Something else!!

What is the magnitude of $\frac{d\mathbf{l} \times \hat{\mathcal{R}}}{\mathcal{R}^2}$?

- A. $\frac{dl \sin \phi}{z^2}$
- B. $\frac{dl}{z^2}$
- C. $\frac{dl \sin \phi}{z^2 + a^2}$
- D. $\frac{dl}{z^2 + a^2}$
- E. something else!



What is $d\mathbf{B}_z$ (the contribution to the vertical component of \mathbf{B} from this $d\mathbf{l}$ segment?)

A. $\frac{dl}{z^2+a^2} \frac{a}{\sqrt{z^2+a^2}}$

B. $\frac{dl}{z^2+a^2}$

C. $\frac{dl}{z^2+a^2} \frac{z}{\sqrt{z^2+a^2}}$

D. $\frac{dl \cos \phi}{\sqrt{z^2+a^2}}$

E. Something else!

